

STONE

ENVIRONMENTAL, ENGINEERING & SCIENCE

748 GREEN CREST DRIVE • WESTERVILLE, OH 43081 • 614.865.1874 • STONEENVIRONMENTAL.COM
 2710E LINDEN AVENUE • DAYTON, OH 45410 | 12 EAST EXCHANGE STREET, 7TH FLOOR • AKRON, OH 44308

MARY SHARRETT, PE, LEED AP, CPESC - PRESIDENT • MARYSHARRETT@STONEENVIRONMENTAL.COM

Company Overview

Our mission at Stone Environmental Engineering & Science, Inc. (STONE) is to improve the environment around us – both natural and manmade. We are a diverse and passionate group of engineers, ecologists, surveyors, and scientists who solve challenging problems. This includes in-house staff who complete infrastructure design to ecological surveys to permitting compliance. We perform a wide variety of environmental and civil engineering design services, working together with our clients to understand and meet their unique individual needs.

Key Services

ASSESSMENT	DESIGN & SURVEY
Phase I & II ESA Remedial Action Underground Storage Tanks Asbestos Lead-Based Paint Wetlands & Streams Ecological Evaluation Freshwater Mussel Surveys Soil & Water Sampling Discharge & Waste Sampling Air & Dispersion Modeling Groundwater Modeling Source Water Protection	Civil Site Design Hydraulics Bridge Design Boundary/Topographic Survey Waste Treatment Wastewater Pretreatment Storm Water (SWP3) Spill Prevention (SPCC) Wetland & Stream Mitigation GIS
PERMITTING	COMPLIANCE
NEPA & Waterway Air & Emissions Industrial Discharge Permit to Install / Operate (PTIO) Storm Water Section 401/404 Regulatory Compliance Agency Negotiation	Facility Audits Hazardous Waste Facility Reporting TRI & SARA Storm Water Wetland & Stream Mitigation Construction Inspection Construction Management Training

Differentiators

- 100% Woman-Owned and Operated
- In-House Multi-Disciplined Engineers, Scientists, and Surveyor
- High-level Ecologists with Federal Mussel Species Certification
- Experienced Staff, most with more than 20 years in their discipline
- ODOT Environmental Monitoring Task Order Contract
- ODOT Statewide ESA Task Order Contract

Past Performance Clients

- Federal: USGS, WPAFB
- State of Ohio: Facilities Construction Commission (OFCC), Dept. of Natural Resources (ODNR), Department of Transportation (ODOT)
- Cities: Columbus, Dayton, Gahanna, Westerville, Marysville
- The Ohio State University (OSU), Otterbein University, Ohio University
- Parks: Westerville, Columbus & Franklin County Metro Parks
- Private: AEP, Pepsi, Beaver Excavating, Kokosing, Pulte Homes, AMP-Ohio, Calgon Carbon, V&S Galvanizing, TS Tech, Ohio Steel, Dragados

CAPABILITY STATEMENT

Firm Certifications

WOSB – Federal U.S. SBA (3rd Party Cert.)
 WBENC – National Women's Business Enterprise
 EDGE – Ohio
 DBE – Ohio and West Virginia
 FBE / WBE – Columbus, Toledo, Dayton (PEP),
 Northeast Ohio Regional Sewer District
 (NEORS), Cincinnati MSD (SBE)

Ohio DOT Prequalifications:

- Non-complex Roadway Design
- Bicycle Facilities & Enhancement
- Construction Inspection (1 & 2)
- Construction Management
- ROW Plan Development
- Bridge Design – Level 1
- Environmental Document – EA/EIS, CE, 4(f)
- Ecological Surveys
- Stream and Wetland Mitigation
- Waterway Permits
- Air Quality Analyses
- ESA Screening, Phase I & II ESA
- ESA Remedial Design

OFCC Prequalified

- Engineer, Surveying, Energy Services
 Consultant List - FY 2018-19
- Hazardous Materials Consultant List - 2017-19

Company Designations

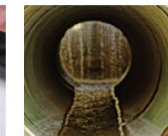
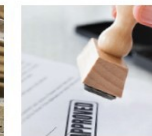
Cage Code: 1QF67
 DUNS #: 619655350, EIN: 31-1262683
 SAM Registration: Active
 Structure: Small Business, C-Corp

NAICS Codes

- 541330 Engineering Services
- 541620 Environmental Consulting
- 541690 Other Scientific & Technical Consulting
 Services
- 541370 Surveying and Mapping

Personnel Certifications

PE – Professional Engineer
 PS – Professional Surveyor
 CP – Ohio VAP Certified Professional
 AHES – Asbestos Hazard Specialist
 LRA – Lead Inspector/Risk Assessor
 BCEE – Board Certified Environmental Engineer
 CPESC – Certified Professional in Erosion &
 Sediment Control
 LEED AP – Leadership in Energy &
 Environmental Design
 CESSWI – Certified Erosion, Sediment, &
 Storm Water Inspector
 PWS – Professional Wetland Scientist
 Ohio EPA Qualified Data Collector Level II/III
 Federal (USFWS) Permit for Mussel Surveys
 State (ODNR) Permit for Mussel Surveys



WPAFB Task Order A/E Services, Dayton, Ohio.



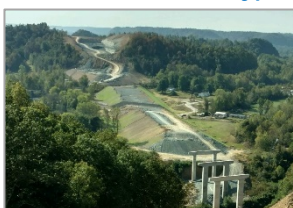
Several engineering tasks for WPAFB were completed by STONE (formally Shaw, Weiss and DeNaples) that addressed design of an oil/water separator and containment areas for a fueling area and design services for the rehabilitation of utility tunnels. The rehabilitation of utility tunnels included inspection of the structures, drainage, piping, and electrical conduit; preparation of detailed plans; definition of the limits of disrepair; specification preparation for structural repairs; replacement of piping and electrical equipment; as well as improvements to the access points to the tunnels.

Laboratory Decommissioning Services, U.S. Geological Society (USGS), Columbus, Ohio.



USGS was decommissioning their laboratory in preparation of a move. STONE completed cleaning/decontamination of laboratory equipment to be moved to a new facility (sample coolers and freezers, centrifuge, biosafety cabinets), cleaning/decontamination of laboratory items that were to be removed and disposed (such as countertops and cabinets), completion of sampling of P-traps and wastewater rinsate for disposal waste characterization, completion of wipe sampling throughout the laboratory area, and associated reporting of the activities performed and sampling results.

ODOT Portsmouth Bypass Environmental Commitment Compliance, Ohio DOT / PJV, Portsmouth, Ohio.



STONE is in year two of completing extensive on-site review and management documentation for compliance to over 300 environmental commitments for the 16-mile, \$480M highway on a new alignment – Ohio DOT's largest P3-project. STONE was chosen for the project due to our understanding of environmental regulations, permit conditions, floodplain coordination, threatened and endangered species, specifications, and construction methods; our communication; and our responsiveness. STONE is on-call for all environmental issues which develop. Our responsiveness to these situations has increased our scope on the project, including the completion of an underground storage tank (UST)

closures, permit modifications, agency reporting, and over 30 Ecological Surveys, Species Surveys, and ODOT Clearance documents. As a result of this project we have been retained to complete training and additional services for this client on other projects.

Hannah Mayne Park Bridge Replacement – Parks and Recreation Department – Westerville, Ohio.



The City of Westerville contracted STONE to develop construction documents for the replacement of the Hannah Mayne Park Bridge. The existing 30-year old bridge was destroyed during a wind storm. The Parks and Recreation Department desired to replace the bridge, improve the path connections and access ramps, provide stream protection for the abutments, and remove and cap an abandoned section of sanitary sewer line that formed the support of the existing bridge. STONE worked closely with Park personnel to develop an overall plan for bridge replacement, trail upgrade, sanitary sewer abandonment, and stream protection. The resulting construction plans resulted in bids that came in within the City's

proposed budget and addressed all of the components of the City's plan for the replacement. As part of the contract, STONE provided limited construction administration assistance during the field work.

Risk Assessments and Analyses at Multiple Industrial Facilities – Wood / City of Dayton Department of Water, Division of Environmental Management – Dayton, Ohio.



STONE was contracted to conduct risk analyses and assessments for multiple industrial facilities as a measure of compliance with the City's Source Water Protection Program (SWPP). The risk assessments were designed to identify and define potential contaminant sources to the City's drinking water supply, identify and develop efforts for the facilities to reduce risk, and recommend actions to eliminate and reduce the identified and defined risks. STONE's environmental compliance assessment of each facility included a review of current environmental permits listed for the facility, a discussion with site personnel regarding general site operations and materials used, a cursory review of documents provided by the site

representative, and a walk-through of the facility (interior and exterior) in an attempt to note environmental conditions, especially related to chemical material receiving and storage, waste materials generated, material and waste shipping, wastewater generation and discharge, and storm water management. STONE then developed recommendations and a matrix for prioritizing corrective measures.