

# STONE

ENVIRONMENTAL, ENGINEERING & SCIENCE

748 GREEN CREST DRIVE • WESTERVILLE, OH 43081 • 614.865.1874 • STONEENVIRONMENTAL.COM  
 2710E LINDEN AVENUE • DAYTON, OH 45410 | 12 EAST EXCHANGE STREET, 7TH FLOOR • AKRON, OH 44308  
 1435 VINE STREET • CINCINNATI, OHIO 45202

MARY SHARRETT, PE, LEED AP, CPESC - PRESIDENT • MARYSHARRETT@STONEENVIRONMENTAL.COM

## Company Overview

Our mission at **Stone Environmental Engineering & Science (STONE)** a division of CAP-STONE & Associates, Inc., is to improve the environment around us – both natural and manmade. We are a diverse and passionate group of engineers, ecologists, geologists, and scientists who solve challenging problems. We perform a wide variety of environmental, ecological, and civil engineering design services, working together with our clients to understand and meet their unique individual needs.

## Key Services

ASSESSMENT	DESIGN
Phase I & II ESA   Remedial Action Underground Storage Tanks Asbestos   Lead-Based Paint Wetlands & Streams Ecological Evaluation Freshwater Mussel Surveys Soil & Water Sampling Discharge & Waste Sampling Air Modeling Groundwater	Civil Site Design Hydraulics Road and Trail Design Wastewater Storm Water (SWP3) Spill Prevention (SPCC) Wetland & Stream Mitigation GIS
PERMITTING	COMPLIANCE
Wetlands & NEPA Air & Emissions Industrial Discharge Permit to Install / Operate (PTIO) Storm Water Section 401/404 (Waterway) Regulatory Negotiation	Facility Audits Hazardous Waste Facility Reporting TRI & SARA Storm Water Wetland & Stream Mitigation Construction Inspection Training

## Differentiators

- Woman-Owned Small Business
- In-House Multi-Disciplined Engineers and Scientists
- High-level Ecologists with Federal Mussel Species Certification
- Experienced Staff, most with more than 20 years in their discipline
- 2018 ODOT DBE Consultant of the Year
- Firm accepts credit cards

## Past Performance Clients

- Federal: USGS, WPAFB
- State of Ohio: Facilities Construction Commission (OFCC), Dept. of Natural Resources (ODNR), Department of Transportation (ODOT)
- Cities: Columbus, Dayton, Gahanna, Westerville, Marysville
- The Ohio State University (OSU), Otterbein University, Ohio University
- Parks: Westerville, Columbus & Franklin County Metro Parks
- Private: Beaver Excavating, Davey Resource Group, Dragados USA, Kemba, Ohio Equities, Battelle, Intel, Pepsi, Kahiki Foods

## CAPABILITY STATEMENT

### Firm Certifications

- WOSB – Federal U.S. SBA
- WBENC – National Women's Business Enterprise
- EDGE – State of Ohio
- DBE – State of Ohio, State of West Virginia
- FBE / WBE – City of Columbus, City of Toledo, City of Dayton (PEP), Northeast Ohio Regional Sewer District (NEORSD),

### Company Designations

- Cage Code: 1QF67
- DUNS #: 619655350
- SAM Registration: Active
- Structure: Small Business, S-Corp

### NAICS Codes

- 541330 Engineering Services
- 541620 Environmental Consulting
- 541690 Other Scientific & Technical Consulting Services

### Personnel Certifications

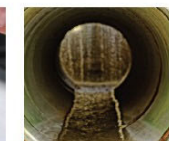
- PE – Professional Engineer (OH, WV, NJ, OK, KY)
- VAP CP – Ohio EPA Voluntary Action Program Certified Professional
- AHES – Asbestos Hazard Evaluation Specialist
- AHAS – Asbestos Hazard Abatement Specialist
- AHPD – Asbestos Hazard Project Designer
- Certified Senior Ecologist
- PWS – Professional Wetland Scientist
- CPESC – Certified Professional in Erosion & Sediment Control
- LEED AP – Leadership in Energy & Environmental Design
- CESSWI – Certified Erosion, Sediment, & Storm Water Inspector
- Ohio EPA Qualified Data Collector Level II/III
- Federal and State Freshwater Mussel Surveyors

### Ohio DOT Prequalifications:

- Non-complex Roadway Design
- Bicycle Facilities & Enhancement
- Environmental Document – EA/EIS, CE, 4(f)
- Ecological Surveys
- Stream and Wetland Mitigation
- Waterway Permits
- Air Quality Analyses
- Regulated Materials Review

### OFCC Prequalified

- Engineer, Surveying, Energy Services Consultant List - FY 2018-19
- Hazardous Materials Consultant List - 2017-19

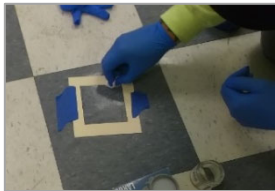


### Wright Patterson Air Force Base (WPAFB) Task Order A/E Services - Dayton, Ohio



Several engineering tasks for WPAFB were completed by STONE (formerly Shaw, Weiss and DeNaples) that addressed design of an oil/water separator and containment areas for a fueling area and design services for the rehabilitation of utility tunnels. The rehabilitation of utility tunnels included inspection of the structures, drainage, piping, and electrical conduit; preparation of detailed plans; definition of the limits of disrepair; specification preparation for structural repairs; replacement of piping and electrical equipment; as well as improvements to the access points to the tunnels.

### Laboratory Decommissioning Services, U.S. Geological Society (USGS) - Columbus, Ohio



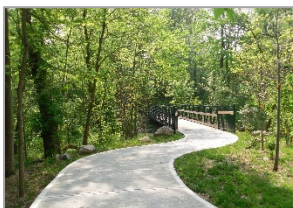
USGS was decommissioning their laboratory in preparation of a move. STONE completed cleaning/decontamination of laboratory equipment to be moved to a new facility (sample coolers and freezers, centrifuge, biosafety cabinets), cleaning/decontamination of laboratory items that were to be removed and disposed (such as countertops and cabinets), completion of sampling of P-traps and wastewater rinsate for disposal waste characterization, completion of wipe sampling throughout the laboratory area, and associated A/E reporting of the activities performed and sampling results.

### 16-Mile US-823 Portsmouth Bypass on New Alignment Environmental Commitment Compliance - Portsmouth, Ohio



STONE completed 4 years of extensive on-site review and management documentation for compliance to over 300 environmental commitments for the 16-mile, \$480M highway on a new alignment – Ohio DOT's largest P3-project. STONE was chosen for the project due to our understanding of environmental regulations, permit conditions, floodplain coordination, threatened and endangered species, specifications, and construction methods; our communication; and our responsiveness. STONE was on-call for all environmental issues which developed. Our responsiveness to these situations increased our scope on the project, including the completion of an underground storage tank (UST) closure, permit modifications, agency reporting, and over 30 Ecological Surveys, Species Surveys, and ODOT Clearance documents.

### Hannah Mayne Park Bridge Replacement – Parks and Recreation Department – Westerville, Ohio



The City of Westerville contracted STONE to develop construction documents for the replacement of the Hannah Mayne Park Bridge. The existing 30-year old bridge was destroyed during a wind storm. The Parks and Recreation Department desired to replace the bridge, improve the path connections and access ramps, provide stream protection for the abutments, and remove and cap an abandoned section of sanitary sewer line that formed the support of the existing bridge. STONE worked closely with Park personnel to develop an overall plan for bridge replacement, trail upgrade, sanitary sewer abandonment, and stream protection. The resulting construction plans resulted in bids that came in within the City's proposed budget and addressed all of the components of the City's plan for the replacement. As part of the contract, STONE provided limited construction administration assistance during the field work.

### Risk Assessments and Analyses at Multiple Industrial Facilities – Amec Foster Wheeler / City of Dayton Department of Water, Division of Environmental Management – Dayton, Ohio



STONE was contracted to conduct risk analyses and assessments for multiple industrial facilities as a measure of compliance with the City's Source Water Protection Program (SWPP). The risk assessments were designed to identify and define potential contaminant sources to the City's drinking water supply, identify and develop efforts for the facilities to reduce risk, and recommend actions to eliminate and reduce the identified and defined risks. STONE's environmental compliance assessment of each facility included a review of current environmental permits listed for the facility, a discussion with site personnel regarding general site operations and materials used, a cursory review of documents provided by the site representative, and a walk-through of the facility (interior and exterior) in an attempt to note environmental conditions, especially related to chemical material receiving and storage, waste materials generated, material and waste shipping, wastewater generation and discharge, and storm water management. STONE then developed recommendations and a matrix for prioritizing corrective measures.